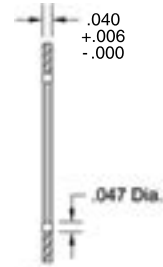
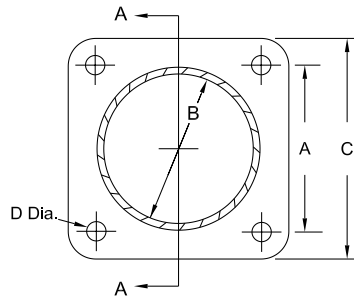


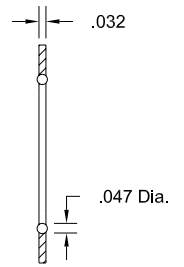
# EMI-Only Connector-Seal



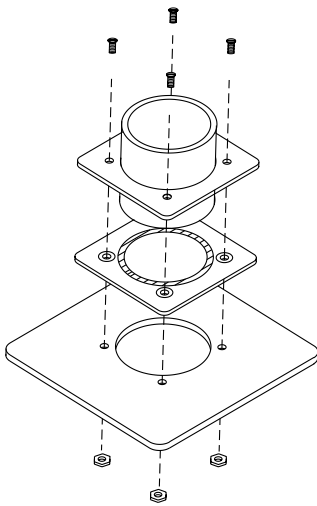
Spira's EMI-Only Connector-Seal gaskets are designed to provide an EMI seal in flange-mounted connectors for the life of a system. These gaskets are extremely durable, and have achieved up to 1,000 insertions in actual use.



Section A-A  
CS Series



Section A-A  
SSCG Series



**CS Series: Silicone or Fluorosilicone on a Stainless Steel Frame**

**CS - T - /**

Dash No. From Table

Gasket Plating  
T: Tin  
E: Edge  
IW: RoHS  
EIW: RoHS Edge

Elastomeric Sealing  
/S: Silicone  
/F: Fluorosilicone

**Original SSCG Series: Aluminum Frame (Old style - replaced by CS)**

**SSCG - T - - O**

Gasket  
T: Spira-Shield  
B: Enduro-Shield

Dash No. From Table

Dash No.	For Use with Connectors			A ±.005"	B +.010" -.005"	C ±.020"	D +.010" -.005"	
	MIL-C-26482, 26500, 83723 Series 1 & 3 NAS 1599 "B" & "T" Size	MIL-C-38999						MIL-C-81703 Size
		1 & 2 Size	3 & 4 Size					
01	8	8		.594"	.562"	.937"	.125"	
02				.625"	.623"	1.000"	.125"	
03	10	9 & 10	9	.719"	.687"	1.062"	.125"	
04				.798"	.883"	1.200"	.125"	
05	12	11 & 12	10 & 11	.812"	.812"	1.156"	.125"	
06				.812"	.828"	1.200"	.125"	
07	14	13 & 14	12 & 13	.906"	.947"	1.200"	.125"	
08				.928"	1.070"	1.375"	.125"	
09	16	15 & 16	14 & 15	.969"	1.063"	1.375"	.125"	
10				.978"	1.133"	1.437"	.125"	
11	18	17 & 18	16 & 17	1.062"	1.187"	1.437"	.125"	
12				1.140"	1.325"	1.625"	.125"	
13				1.187"	1.325"	1.562"	.125"	
14	20	19 & 20	18 & 19	1.156"	1.312"	1.563"	.125"	
15				1.238"	1.508"	1.825"	.125"	
16	22		20 & 21	1.250"	1.437"	1.687"	.125"	
17	24		22 & 23	1.375"	1.562"	1.825"	.152"	
18				1.392"	1.633"	1.937"	.152"	
19				1.436"	1.570"	1.825"	.125"	
20		25	24 & 25	1.500"	1.682"	1.937"	.152"	
21				1.568"	1.830"	2.250"	.152"	
22				1.716"	2.030"	2.375"	.173"	
23				.753"	.771"	1.100"	.125"	
28	32			1.750"	2.062"	2.312"	.173"	
29				1.062"	1.250"	1.437"	.125"	
32				1.938"	2.186"	2.550"	.173"	
33			24 & 25	1.500"	1.682"	1.850"	.152"	
34	36			1.938"	2.312"	2.600"	.173"	
35				1.750"	1.846"	2.250"	.173"	
39				1.187"	1.437"	1.687"	.125"	
40				1.437"	1.726"	1.880"	.125"	

Outer Conductive Spiral:  
Tin/Lead Plated Beryllium Copper



Resilient Inner Core:  
Solid Silicone (SSCG only)

## Application Information

The “CS” EMI-Only Connector-Seal is a more durable, cost effective replacement of Spira’s original Connector-Seal (“SSCG”) and can be either back or front-mounted. The CS EMI-Only gasket is similar to the EMI & Environmental Connector-Seal (ECS), but due to frame dimensions it **does not provide Environmental sealing**.

When choosing a gasket, select an inside diameter that easily clears the connector barrel. The shielding is achieved by making contact between the two joint surfaces, not by touching the barrel. The older SSCG gaskets can still be ordered if desired.

### Materials

See page 59 for material specifications.

**CS Frame:** Silicone (/S) or Fluorosilicone (/F) sealing over a stainless steel frame.

**CS Spiral:** Spira-Shield standard force tin/lead plated beryllium copper.

**SSCG Frame:** Chem-film plated aluminum (old style, replaced by CS)

**SSCG Spiral:** Enduro-Shield moderate force tin/lead plated beryllium copper.

**SSCG Core:** Cured silicone adhesive.

(See *Options* for RoHS compliance).

### Shielding Quality

EMI Connector-Seal gaskets offer shielding quality from 116 to 152 dB. The shielding quality may vary depending on your specific application. Refer to Shielding Quality for more complete performance data.

### Compression Force

Optimal compression of the gasket is 25% of the diameter of the spiral. The compression force stated is approximate. When installing the gasket, care must be taken to clear the mounting pins one at a time.

**CS Series:** ~30 pounds per linear inch compression force required.

**SSCG Series:** ~10 pounds per linear inch compression force required.

## Available Options

### Plating

See page 60 for material compatibility information.

The gasket is electroplated, 90% tin, 10% lead per AMS-P-81728 (edges unplated). Plating options can be specified by adding a prefix before the part number:

**E:** Edge tin/lead plating (includes edges) for high humidity or salt-fog environments

**IW:** RoHS compliant tin plating (Example: **CS-IW-20 /S**)

**EIW:** RoHS compliant edge tin plating for high humidity or salt-fog

### SSCG Core Material

The SSCG uses a Spira-Seal gasket with a standard core of solid silicone adhesive. A special core can be specified by adding an option to the end of the part number:

**-F:** Fluorosilicone (Example: **CS-T-16 /F**)

**-O:** Silicone that meets outgassing requirements

**-Z:** Silicone which is a non-acetic acid adhesive (per MIL-A-46146)

### Frame

Specify frame and other options by choosing the desired prefix from the table.

Example:  
**CS-E-14 /S**

EMI Connector-Seal  
Edge tin/lead plated  
gasket, Silicone frame

The frame on our CS series gaskets is stainless steel sealed on both sides by silicone or fluorosilicone elastomeric material. The SSCG series gaskets have a chem-film plated aluminum frame. The CS gaskets are still **EMI-only protection** due to the sizing. Please see the previous page for environmental sealing if required. Not all configurations are stock items. Contact us for availability.

Frame	Options	Tin/Lead Plated Gasket	RoHS Tin Plated Gasket	Edge Tin/Lead Plated Gasket	RoHS Edge Tin Plated Gasket
<b>Elastomeric Frame Material</b>	Silicone Fluorosilicone	CS-T-__ /S CS-T-__ /F	CS-IW-__ /S CS-IW-__ /F	CS-E-__ /S CS-E-__ /F	CS-EIW-__ /S CS-EIW-__ /F
<b>Chem-Film Aluminum</b>	n/a	SSCG-T-__ -O	IWSSCG-T-__ -O	ESSCG-T-__ -O	EIWSSCG-T-__ -O

Specify dash number from table on page 27.

