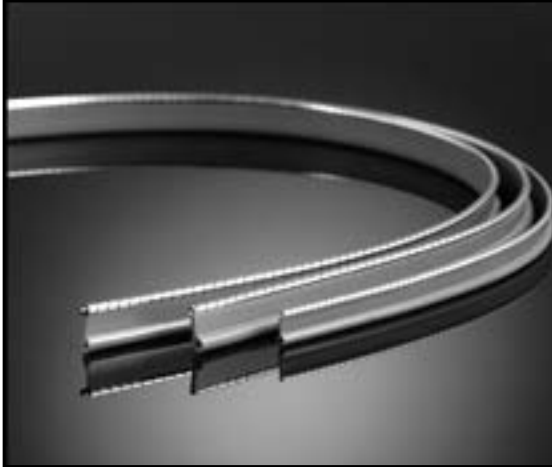
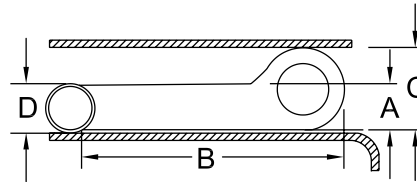


# Basic Multi-Seal



Spira's Basic Multi-Seal gasket is the gasket of choice when you need an outstanding environmental seal for a surface mount application. The standard configuration (shown below) includes a Spira-Shield gasket for superior shielding, or see *Options* for other spiral materials.



See page 55 for surface mounting information.

| Gasket Dimensions        |                      |                     |                      |                    | Basic Multi-Seal Part Numbers<br>(Spira-Shield Gasket) |                |           |
|--------------------------|----------------------|---------------------|----------------------|--------------------|--|----------------|-----------|
| Elastomer Thickness<br>A | Elastomer Width<br>B | Bulb Thickness<br>C | Spiral Diameter<br>D | Total Gasket Width | Standard Force*  | Moderate Force | Low Force |
| .063"                    | .375"                | .125"               | .094"                | .469"              | CSS-0623   | CMS-0623       | CLS-0623  |
| .094"                    | .375"                | .187"               | .125"                | .500"              | CSS-0833   | CMS-0833       | CLS-0833  |
| .094"                    | .500"                | .187"               | .125"                | .625"              | CSS-0834   | CMS-0834       | CLS-0834  |
| .094"                    | .625"                | .187"               | .125"                | .750"              | CSS-0835   | CMS-0835       | CLS-0835  |

Moderate and low force gaskets come with a cord unless specified otherwise. (See *Options*).

\*All standard force gaskets come without a cord.

## Application Information

The Multi-Seal gasket is made by attaching the Spira-Shield gasket to a silicone elastomeric extrusion. The extrusion is used to hold the EMI gasket in place and provides an excellent, low force environmental seal. This gasket can be made into a custom Framed Gasket to your specifications. (See page 38).

### Materials

See page 59 for material specifications.

**Spiral:** Spira-Shield, Tin/lead plated beryllium copper.

**Elastomer:** Solid silicone rubber, 60 durometer.

(See *Options* for RoHS compliance or other material choices).

### Shielding Quality

This gasket offers shielding quality from 86 dB to 165 dB. The shielding quality may vary depending on your specific application. Refer to Shielding Quality for more complete performance data.

### Compression Force

Basic Multi-Seal gaskets come in three different resiliencies (as shown below). Optimal compression of the gasket is 25% of the diameter of the spiral. Since the force to compress the gasket is a function of the cube of the thickness of the beryllium copper ribbon, the compression forces shown are approximate.

**Standard Force:** ~33 pounds per linear inch compression.

**Moderate Force:** ~13 pounds per linear inch compression.

**Low Force:** ~5 pounds per linear inch compression.

## Mounting

This gasket is surface mounted. See page 55 for detailed mounting information.

For groove mount applications where you need environmental sealing, refer to our "D" Multi-Seal data sheet on page 13.

## Available Options

### Spiral Material

See page 60 for material compatibility information.

Basic Multi-Seal comes standard with a tin/lead plated Spira-Shield gasket. Other spiral materials or plating may be specified by choosing a different prefix from the following table. See pages 1-10 for more information on the Spiral materials.

1. Choose the desired gasket from the table on page 15 based on size and force.  
Example: **CMS-0835**, moderate force
2. Substitute the prefix from the table below based on spiral material and plating.  
Example: **CESIMS-0835**, moderate force Enduro-Shield, edge tin/lead plated BC.

Specify a different spiral material by choosing the desired prefix from the table.

Example:  
**CIWST-0833**  
Basic Multi-Seal  
Flexi-Shield RoHS  
Tin plated beryllium  
copper gasket  
Standard force  
(Includes cord)

|   | Spira-Shield                | Quick & Ultra Quick-Shield | Flexi-Shield               |                         |
|---|-----------------------------|----------------------------|----------------------------|-------------------------|
| Spiral:   | Tin Plated BC               | St. Steel                  | Tin Plated BC              | St. Steel               |
| <b>Standard:<br/>Tin/Lead or<br/>No Plating</b>         | CSS (default)<br>CMS<br>CLS | CNI<br>CNM<br>CNL          | CST<br>CMT<br>CLT          | CSQ<br>CMQ<br>CLQ       |
| <b>Tin/Lead or<br/>Edge Plating<br/>Option (T or E)</b> | CESS<br>CEMS<br>CELS        | CTNI<br>CTNM<br>CTNL       | CEST<br>CEMT<br>CELT       | CTSQ<br>CTMQ<br>CTLQ    |
| <b>RoHS Tin Plating<br/>Option (IW)</b>                 | CIWSS<br>CIWMS<br>CIWLS     | CIWNI<br>CIWNM<br>CIWNL    | CIWST<br>CIWMT<br>CIWLT    | CIWSQ<br>CIWMQ<br>CIWLQ |
| <b>RoHS Edge<br/>Tin Plating<br/>Option (EIW)</b>       | CEIWSS<br>CEIWMS<br>CEIWLS  | --                         | CEIWST<br>CEIWMT<br>CEIWLT | --                      |

### Cord Insert

Standard Force gaskets come without a cord and we recommend to omit the cord in all gaskets by specifying "NC" (no cord). Cord is available if needed in PVC, solid fluorosilicone, solid silicone and thermal plastic rubber depending on the size and should be ordered to match the elastomer chosen. Please contact us for details.  
**NC:** No Cord (Example: **CMS-0835 NC**)

### Special Elastomer

The standard elastomer is solid silicone. A special elastomer can be specified as shown below (available in certain sizes only). Note that these elastomers (as with most special options) are non-stock items and will include additional charges.

**/E:** EPDM\* (Example: **CMS-0835 /E**)

**/F:** Fluorosilicone\*

**/O:** Space Qualified Silicone\* (non-outgassing)

\* **Note:** Cord will match elastomer choice if included.

## Ordering Information

Basic Multi-Seal is sold by the foot in approximately 25 foot lengths and typically packaged on cardboard flats except in small quantities. Not all configurations are stock items. Contact us for availability.